



TEST REPORT

Applicant : UTIS
Address : 652-10, Choji-dong, Danwon-ku,
Ansan-city, Gyeonggi-do, Korea

Page: 1 of 5

Report No. RT11R-S0932-001-E

Date: Mar. 14, 2011

Sample Description : The following submitted sample(s) said to be:-

Name/Type of Product : eSORBA SRP-D
Sample ID No. : RT11R-S0932-001
Item No. : SR H-DC, SR J-DC, SR J-DA, SR J-DN, SR J-DT, SR J-DF
Manufacturer/Vender : UTIS

Sample received : Mar. 08, 2011
Testing Date : Mar. 08, 2011 ~ Mar. 11, 2011
Testing Environment : Temperature : (24 ± 2) °C, Humidity : (60 ± 5) % R.H.

Test Type : RoHS wet chemical analysis
Test Method(s) : Please see the following page(s).
Test Result(s) : Please see the following page(s).

- * Note 1 : The test results presented in this report relate only to the object tested.
- * Note 2 : This report shall not be reproduced except in full without the written approval of the testing laboratory.
- * Note 3 : The item no. is assigned by client and indicated according to their requirement and guarantee letter.

Approved by,

Jade Jang / Lab. Technical Manager

Authorized by,

Bo Park / Lab. General Manager

This Test Report is issued by the Company subject to its Terms and Conditions of Business printed overleaf. Attention is drawn to the limitations of liability, indemnification and jurisdictional issues defined therein. This Test Report shall not be reproduced, except in full, without prior written consent of the Company.

Intertek Testing Services Korea Ltd.

Seoul Office: Tel : 02-6090-9500 Fax : 02-3409-0026 Daegu Office : Tel : 053-600-8647 Fax : 053-600-8645 Web Site : www.Intertek.co.kr
Seoul Lab. Address : 1/F, A-ju Digital Tower, #284-56, Seongsu 2-ga, Seongdong-Gu, Seoul, 133-833 Korea
Ulsan Lab. Address : #340-2, Yongam-Ri, Chongryang-Myun, Ulju-Gun, Ulsan 689-865 Korea



TEST REPORT

Page: 2 of 5
Date: Mar. 14, 2011

Report No. RT11R-S0932-001-E

Sample ID No. : RT11R-S0932-001

Sample Description : eSORBA SRP-D

Test Item	Unit	Test Method	MDL	Result
Cadmium (Cd)	mg/kg	With reference to IEC 62321 Edition 1.0 : 2008, by acid digestion and determined by ICP-OES	0.5	N.D.
Lead (Pb)	mg/kg		5	N.D.
Mercury (Hg)	mg/kg		2	N.D.
Hexavalent Chromium (Cr ⁶⁺) (For non-metal)	mg/kg	With reference to IEC 62321 Edition 1.0 : 2008, by alkaline digestion and determined by UV-VIS Spectrophotometer	1	N.D.
Polybrominated Biphenyl (PBBs)				
Monobromobiphenyl	mg/kg	With reference to IEC 62321 Edition 1.0 : 2008, by solvent extraction and determined by GC/MS	5	N.D.
Dibromobiphenyl	mg/kg		5	N.D.
Tribromobiphenyl	mg/kg		5	N.D.
Tetrabromobiphenyl	mg/kg		5	N.D.
Pentabromobiphenyl	mg/kg		5	N.D.
Hexabromobiphenyl	mg/kg		5	N.D.
Heptabromobiphenyl	mg/kg		5	N.D.
Octabromobiphenyl	mg/kg		5	N.D.
Nonabromobiphenyl	mg/kg		5	N.D.
Decabromobiphenyl	mg/kg		5	N.D.
Polybrominated Diphenyl Ether (PBDEs)				
Monobromodiphenyl ether	mg/kg	With reference to IEC 62321 Edition 1.0 : 2008, by solvent extraction and determined by GC/MS	5	N.D.
Dibromodiphenyl ether	mg/kg		5	N.D.
Tribromodiphenyl ether	mg/kg		5	N.D.
Tetrabromodiphenyl ether	mg/kg		5	N.D.
Pentabromodiphenyl ether	mg/kg		5	N.D.
Hexabromodiphenyl ether	mg/kg		5	N.D.
Heptabromodiphenyl ether	mg/kg		5	N.D.
Octabromodiphenyl ether	mg/kg		5	N.D.
Nonabromodiphenyl ether	mg/kg		5	N.D.
Decabromodiphenyl ether	mg/kg		5	N.D.

Tested by : Nikkie Lee, Leo Kim, Ellen Jung, Jessica Kang

Notes : mg/kg = ppm = parts per million
< = Less than
N.D. = Not detected (<MDL)
MDL = Method detection limit

This Test Report is issued by the Company subject to its Terms and Conditions of Business printed overleaf. Attention is drawn to the limitations of liability, indemnification and jurisdictional issues defined therein. This Test Report shall not be reproduced, except in full, without prior written consent of the Company.

Intertek Testing Services Korea Ltd.

Seoul Office: Tel : 02-6090-9500 Fax : 02-3409-0026 Daegu Office : Tel : 053-600-8647 Fax : 053-600-8645 Web Site : www.Intertek.co.kr
Seoul Lab. Address : 1/F, A-ju Digital Tower, #284-56, Seongsu 2-ga, Seongdong-Gu, Seoul, 133-833 Korea
Ulsan Lab. Address : #340-2, Yongam-Ri, Chongryang-Myun, Ulju-Gun, Ulsan 689-865 Korea



TEST REPORT

Page: 3 of 5
Date: Mar. 14, 2011

Report No. RT11R-S0932-001-E

Sample ID No. : RT11R-S0932-001

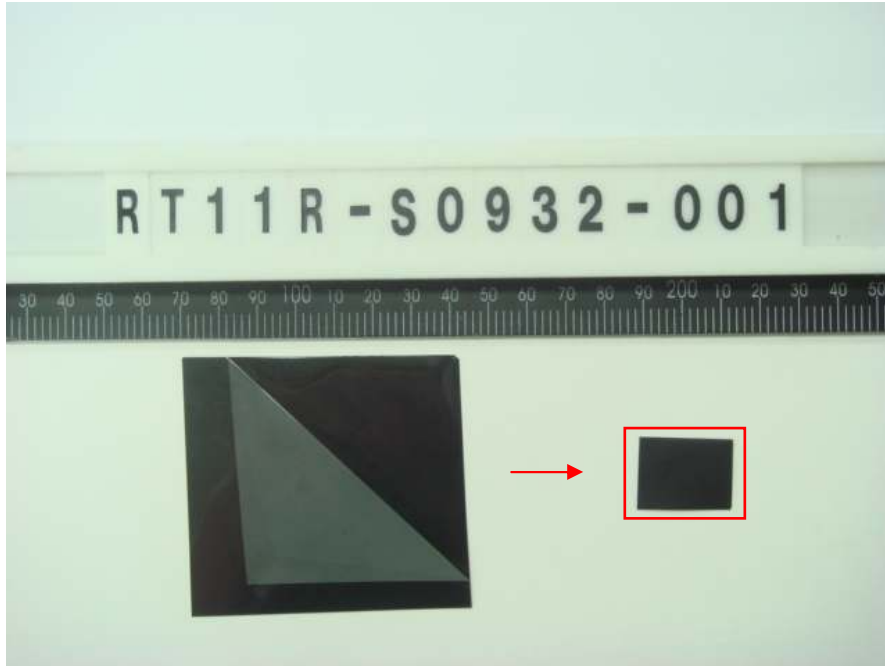
Sample Description : eSORBA SRP-D

Test Item	Unit	Test Method	MDL	Result
Bromine (Br)	mg/kg	With reference to EN 14582, by oxygen combustion with bomb and determined by IC	30	N.D.
Chlorine (Cl)	mg/kg	With reference to EN 14582, by oxygen combustion with bomb and determined by IC	30	N.D.
Fluorine (F)	mg/kg	With reference to EN 14582, by oxygen combustion with bomb and determined by IC	30	N.D.
Iodine (I)	mg/kg	With reference to EN 14582, by oxygen combustion with bomb and determined by IC	30	N.D.

Tested by : Nikkie Lee

Notes : mg/kg = ppm = parts per million
< = Less than
N.D. = Not detected (<MDL)
MDL = Method detection limit

* View of sample as received;-



This Test Report is issued by the Company subject to its Terms and Conditions of Business printed overleaf. Attention is drawn to the limitations of liability, indemnification and jurisdictional issues defined therein. This Test Report shall not be reproduced, except in full, without prior written consent of the Company.

Intertek Testing Services Korea Ltd.

Seoul Office: Tel : 02-6090-9500 Fax : 02-3409-0026 Daegu Office : Tel : 053-600-8647 Fax : 053-600-8645 Web Site : www.Intertek.co.kr
Seoul Lab. Address : 1/F, A-ju Digital Tower, #284-56, Seongsu 2-ga, Seongdong-Gu, Seoul, 133-833 Korea
Ulsan Lab. Address : #340-2, Yongam-Ri, Chongryang-Myun, Ulju-Gun, Ulsan 689-865 Korea

TEST REPORT

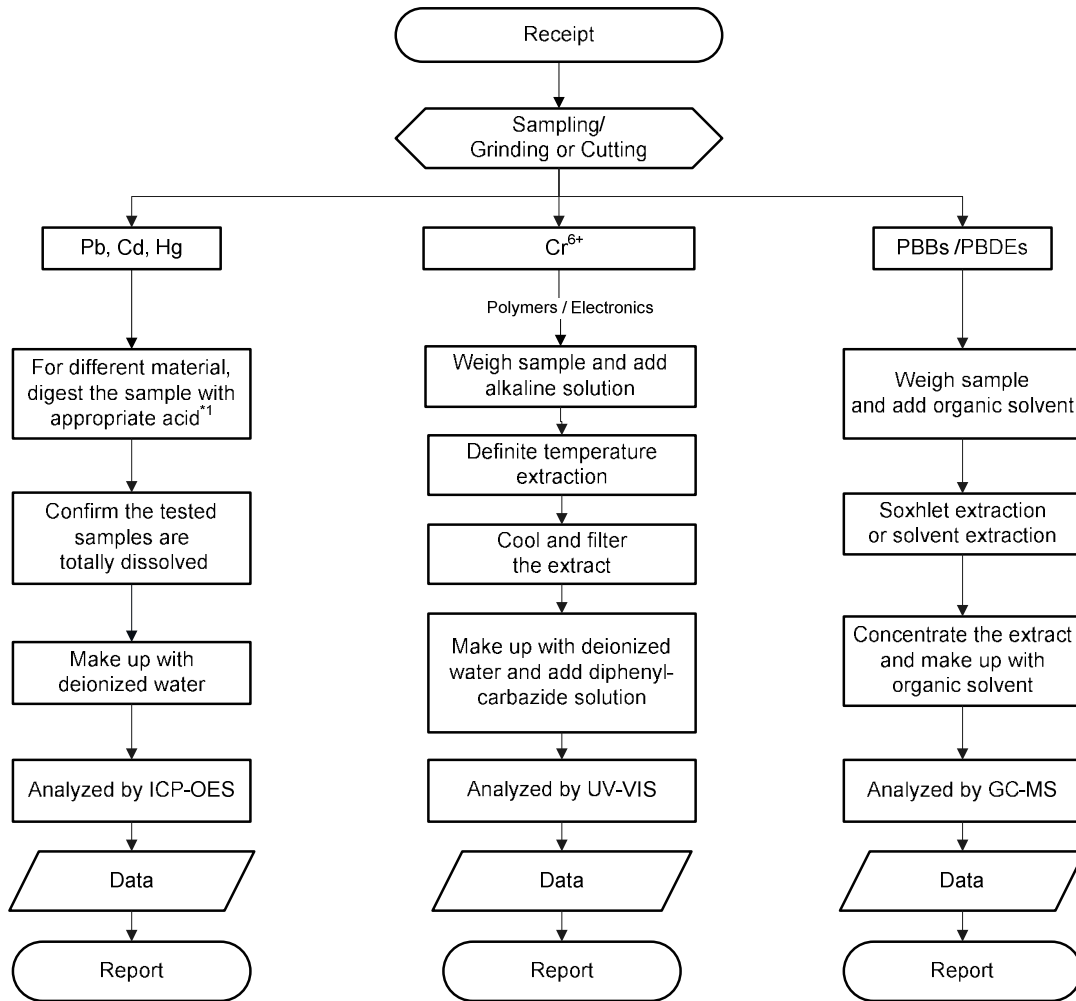
Report No. RT11R-S0932-001-E

Page: 4 of 5
Date: Mar. 14, 2011

Sample ID No. : RT11R-S0932-001

Sample Description : eSORBA SRP-D

Flow Chart
(IEC 62321 Edition 1.0 : 2008)



Remarks :

*1 : List of appropriate acid :

Material	Acid added for digestion
Polymers	HNO ₃ , HCl, HF, H ₂ O ₂ , H ₃ BO ₃
Metals	HNO ₃ , HCl, HF
Electronics	HNO ₃ , HCl, H ₂ O ₂ , HBF ₄

This Test Report is issued by the Company subject to its Terms and Conditions of Business printed overleaf. Attention is drawn to the limitations of liability, indemnification and jurisdictional issues defined therein. This Test Report shall not be reproduced, except in full, without prior written consent of the Company.

Intertek Testing Services Korea Ltd.

Seoul Office: Tel : 02-6090-9500 Fax : 02-3409-0026 Daegu Office : Tel : 053-600-8647 Fax : 053-600-8645 Web Site : www.Intertek.co.kr

Seoul Lab. Address : 1/F, A-ju Digital Tower, #284-56, Seongsu 2-ga, Seongdong-Gu, Seoul, 133-833 Korea

Ulsan Lab. Address : #340-2, Yongam-Ri, Chongryang-Myun, Ulsan 689-865 Korea



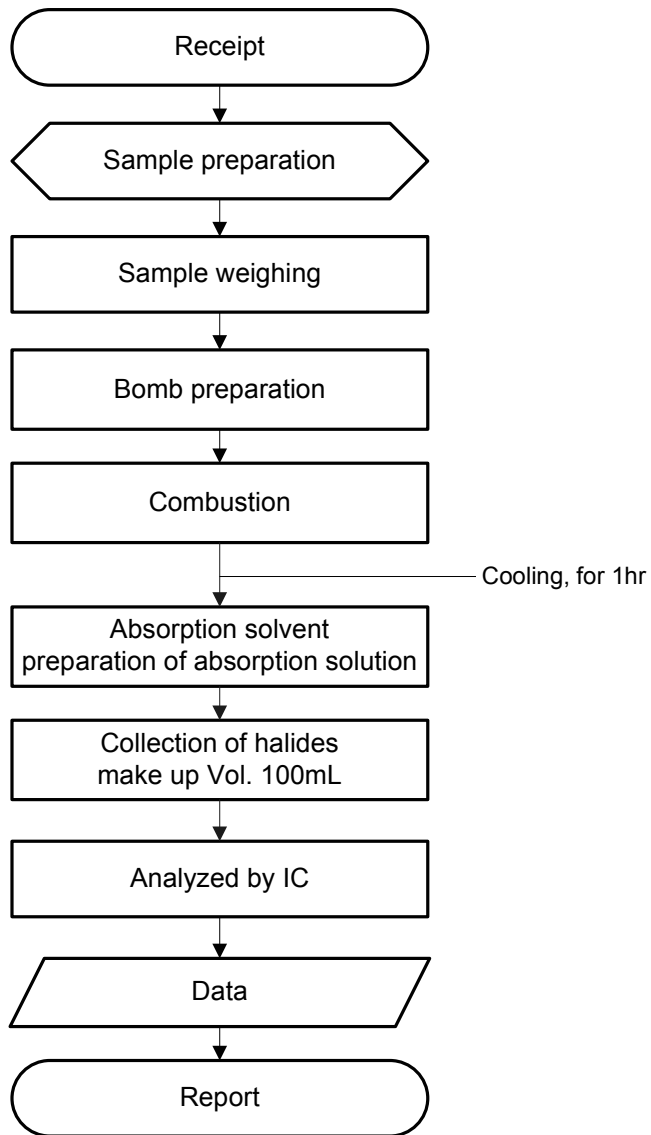
TEST REPORT

Report No. RT11R-S0932-001-E

Sample ID No. : RT11R-S0932-001

Sample Description : eSORBA SRP-D

Flow Chart (Halogen)



***** End of Report *****

This Test Report is issued by the Company subject to its Terms and Conditions of Business printed overleaf. Attention is drawn to the limitations of liability, indemnification and jurisdictional issues defined therein. This Test Report shall not be reproduced, except in full, without prior written consent of the Company.

Intertek Testing Services Korea Ltd.

Seoul Office: Tel : 02-6090-9500 Fax : 02-3409-0026 Daegu Office : Tel : 053-600-8647 Fax : 053-600-8645 Web Site : www.Intertek.co.kr

Seoul Lab. Address : 1/F, A-ju Digital Tower, #284-56, Seongsu 2-ga, Seongdong-Gu, Seoul, 133-833 Korea

Ulsan Lab. Address : #340-2, Yongam-Ri, Chongryang-Myun, Ulju-Gun, Ulsan 689-865 Korea